



Life Abundant

building joyful community



**CHRIST EPISCOPAL CHURCH
SEATTLE, WA**

**CAPITAL CAMPAIGN
2023- 2026**

April 2023



Dear friends,

Through the years as we have been together at Christ Church, we have always had dreams come true. Sometimes we dreamed of lovely Christmas teas. Sometimes we dreamed of excellent lecture series. Sometimes we dreamed projects where we give without return on the streets of the U District. We've been dreaming about accessibility for a long, long time.

Today, as we begin our *Life Abundant: Building Joyful Community* campaign, we commit to making **this dream a reality**. We will make our building accessible to all bodies, create lovely multi-purpose space to worship in more freely and to offer to more people, and bring in a gorgeous historic organ. This dream is a gift to all those who gather here in decades to come.

Our campaign challenges us to work together to be a part of something extraordinary. For many of us, this is a once-in-a-lifetime opportunity for big abundant giving. The ask is for us to give generously over and above our regular offering for the next 156 weeks or 3 years. We *all* have a significant part in God's new dream for us.

We know from years of experience that the practice of giving opens our hearts and souls; giving itself is a blessing. Jesus said, "Give and it shall be given unto you; good measure, pressed down, shaken together, and running over..." [Luke 6:38].

Now is the right time. We are building our life together as we emerge from one of the most difficult times in all of our lives. We are making beautiful promises to each other and to the future. We, the people of Christ Church, are ready for the challenge of this new call! May God bless our effort.

With you,
Rev. Shelly

Shelly Fayette

Rector

Christ Episcopal Church





April 2023

Dear Christ Church Community,

We have been an active part of the Christ Church community for many years. We and our families have been supported by the love and fellowship of this community. We have seen growth and change in our parish and in the University District. We know this community is dedicated to serving Christ in this neighborhood.

The theme of our capital campaign, Life Abundant Building Joyful Community, speaks to the fact that we at Christ Church are planning for a beautiful future. A future in a building accessible and welcoming to all.

Mary Lou visited St Dunstan's recently for a pipe organ recital. The flexible floor plan with Altar, communion rail with cushions, chairs, and even a portable organ console was exciting to see. For this event, the Sanctuary was a concert hall with all the chairs facing the front. The floor arrangement can be converted back to a sacred space for liturgy, prayers and the Eucharist, with the Altar and communion rails surrounded by chairs. The room can also be changed into a meeting hall with chairs grouped in different areas of the Sanctuary.

At St. Dunstan's, the entire sanctuary is on one level with the main entrance on that same level. This is Accessibility we can achieve! This is a future where we, the Christ Church community, will be inclusive and loving. All who enter will feel supported by the love of God. We will reach these goals by generous giving, both financially and through living the love God has given to us.

The future of OUR Joyful Community will be blessed by our financial commitments. Together, we can live the Love that God has given us.

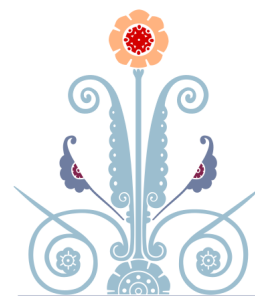
In Christ,

Mary Lou Hatcher

Mary Lou Hatcher
Campaign Co-Chair

Carlotta Han

Carlotta Han
Campaign Co-Chair





Frequently Asked Questions and Answers

Q: What are the projects of our campaign?

A: The following are the projects we seek to fund through our capital campaign:

- ◆ Provide a place in the Sanctuary for the refurbished historic pipe organ.
- ◆ Make the entire Sanctuary and its entrance accessible and able to accommodate other community gatherings in addition to worship services.
- ◆ Add an accessible bathroom on the same level as the Sanctuary.
- ◆ Remodel and enlarge Wilson Hall kitchen.
- ◆ Add another bathroom on Wilson Hall level.
- ◆ Refurbish Wilson Hall's furnishing and add larger cabinets.

Architectural drawings can be viewed at the church website: christchurchseattle.org. (Click on the "Life Abundant" logo)

Q: How were these projects discerned?

A: Accessibility has been a concern of the parish for over 40 years. Previous attempts to address this need either did not solve the problem or were set aside as too costly. The latest indication of support was the overwhelming importance given to making our buildings accessible during our visioning process in 2019.

A pressing issue appeared prior to that in 2018 when our organist/choir director brought it to the Vestry's attention that our current organ was barely functional, requiring constant repair. Replacing this instrument with another electric organ would cost \$1M. After obtaining authorization from the Vestry, he found a historic tracker organ and determined it to be a superb instrument. The Vestry approved its purchase at \$10,000 knowing that the restoration to excellent condition would cost \$400,000. The purchase of a new organ required a remodel of the Sanctuary which could then be dovetailed with making the Sanctuary accessible.

Q: What will our projects cost?

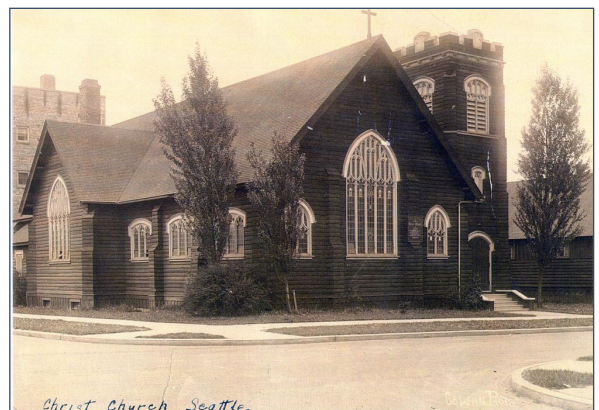
A: The preliminary estimate to accomplish all of our projects currently totals \$1.5 million, which includes a 30% increase due to pandemic and supply chain related causes. The church will match Capital Campaign funds raised up to \$650,000 from the Gahringer bequest. The organ refurbishing and transport costs will come from a different source.

The organ installation, the sanctuary remodel and the accessibility ramp are non-negotiable parts of the total plan. It is hoped that some local business and other grant partners may help us cover the remaining costs; however, adjustments to other parts our plan may need to occur depending on funds raised.

Christ Episcopal Church

Founded in 1903 as All Saints Parish
Name later changed to Christ Episcopal

Picture: 1914



Q: When and how do I pay my pledge? What if my financial circumstances change?

A: Your three-year commitment to the *Life Abundant* campaign may be paid incrementally in weekly, monthly, quarterly, or annual installments, or as a one-time gift. The gifting period will be June 2023 through May 2026. You, as the donor, will decide how best to complete your pledge. Information about how to give will be sent in the mail.

Financial pledges are not legal obligations; however, it is anticipated that members will make their pledges in good faith and will fulfill them fully. If circumstances change, you may revise your pledge by notifying the church.

Q: What are the financial goals of our campaign?

A: The financial goals for our campaign represent a significant challenge for our church. Our hope is to fully fund our renovation projects as outlined. In order to make this happen, each of us will be asked to commit a generous and joyful gift **above and beyond** our regular giving.

Prayerfully consider—and celebrate!—the many blessings God has given you. The choice is yours to freely commit that which has been entrusted to you. Seek God’s guidance as you consider these questions:

- ◆ To what extent does my giving reflect the value I have for this church?
- ◆ To what extent am I acting purposefully, intentionally, and faithfully in my giving?
- ◆ In what ways am I seeking to grow in faith toward God through my serving and giving?

Q: Will we be inviting others outside the church to contribute as well?

A: The best base of financial support will be from us as church members. The total of what we pledge will be shown to possible donors outside the church as a measure of our determination to complete this project. Following our congregational campaign, we’ll be reaching out to local businesses and community partners who have a love and potential interest in the mission of Christ Church to seek their additional financial support. The success of our internal campaign will be vital to making a strong case for support from others. In other words, the more we’re able to raise from within our congregation, the better our chances of receiving funding from others.

Q: Why is this campaign so important?

A: Our campaign is an opportunity for us to reach out with the love of Jesus to build joyful community with one another and those in the world around us. Working together, we will ensure a bright future for Christ Church and create greater opportunity for all people to better know God’s presence in their lives. We hope our Sanctuary and Wilson Hall will be a community presence for other events in the community and also a place for solace and shelter for the homeless.

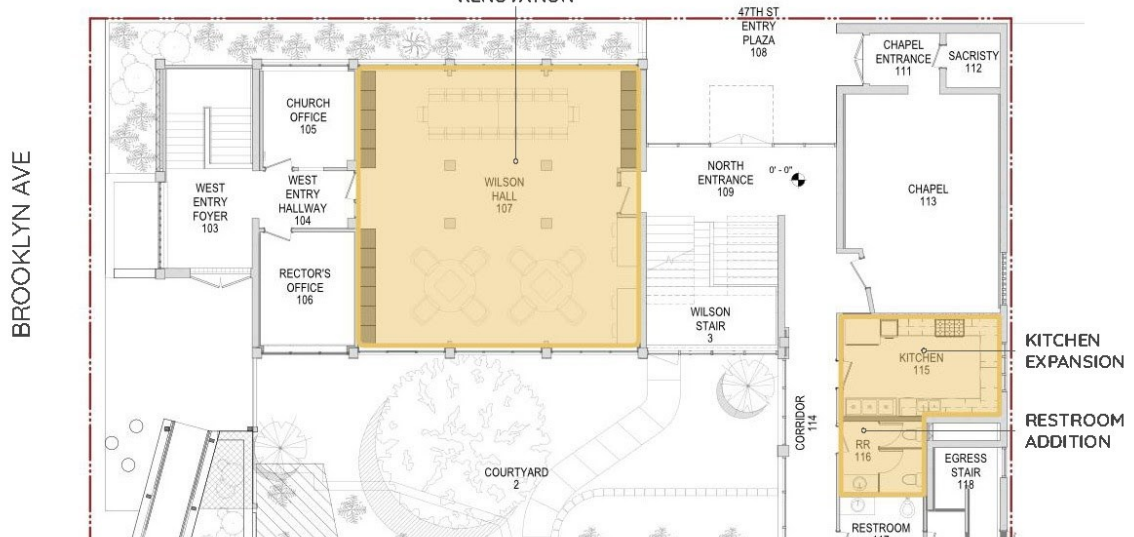
It takes the entire body of Christ Church to accomplish our mission, and your participation in this congregation is precious. Ours is the privilege and opportunity to build up Christ Church, celebrate the abundance God places in our lives, and carry forward the vital ministry we share.



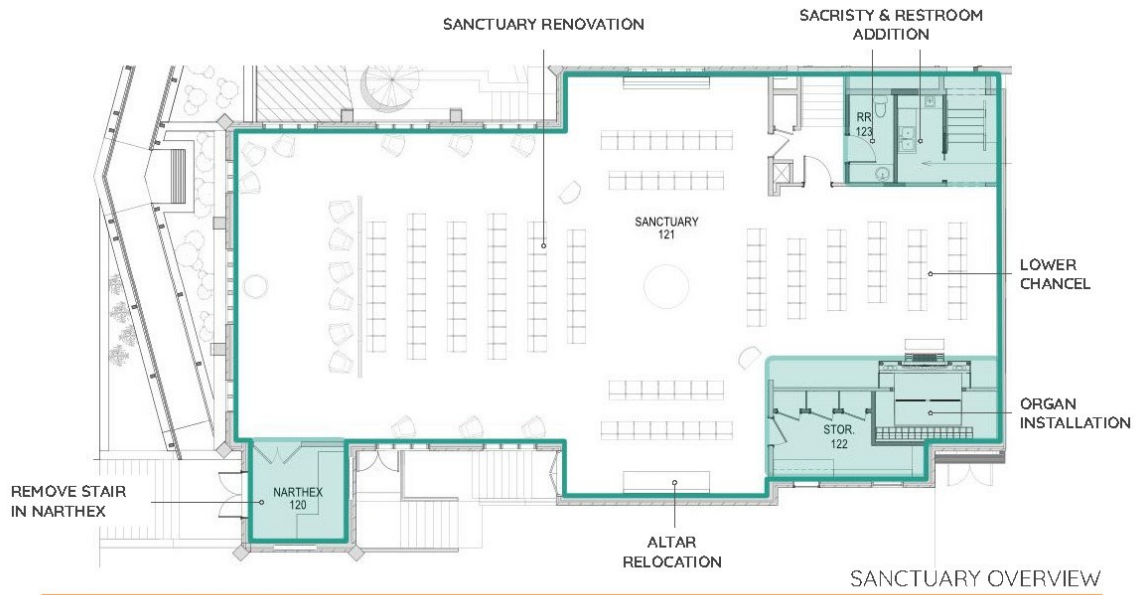


47TH STREET

WILSON HALL RENOVATION



WILSON HALL OVERVIEW



CEC - CAPITAL CAMPAIGN PRESENTATION

HINGE STUDIO
02.12.2023



CEC - CAPITAL CAMPAIGN PRESENTATION

HINGE STUDIO
02.12.2023



Our Campaign Financial Goals

The more we raise, the more we'll be able to accomplish!

CELEBRATION GOAL = \$700,000

CHALLENGE GOAL = \$450,000

CORNERSTONE GOAL = \$300,000

How We'll Reach Our CELEBRATION Goal *It takes everyone . . .*

# of Gifts	Amount (Total Gift Over Three Years)	Total	Cumulative Total
1	\$75,000	\$75,000	\$75,000
2	\$48,000	\$96,000	\$171,000
3	\$36,000	\$108,000	\$279,000
4	\$27,000	\$108,000	\$387,000
5	\$18,000	\$90,000	\$477,000
6	\$12,000	\$72,000	\$549,000
7	\$9,000	\$63,000	\$612,000
8	\$6,000	\$48,000	\$660,000
9	\$3,000	\$27,000	\$687,000
10	\$900 - \$1,800	\$13,000	\$700,000
55			\$700,000

Responding to God's Call

Pray

Pray for God to guide you as you consider how to share your financial resources in our ***Life Abundant—building joyful community*** campaign over the next three years. Remember that these gifts are above and beyond our regular offerings, and will help make our church facilities safer, more accessible and more welcoming for all.

Listen

Tune your heart to discover how God wants you to give of your time, talents, and financial resources.

Commit

As God guides you, make your commitments to our capital campaign. The key is how generous each of us is for the sake of the ministry of our church. **Everyone's** precious gifts are needed!

Celebrate

Thank the Lord for the abundance in your life, and give thanks for the calling you have to carry out God's work in this place. *"On every Lord's Day you should put aside something from what you have earned during the week, and use it for this offering. The amount depends on how much the Lord has helped you earn."* (I Corinthians 16:2)

How Your Gifts Add Up Over Three Years

You may use this chart to easily calculate the total of a certain gift over a 3-year period to see how gifts add up over time.

<u>Weekly</u>	<u>3-Year Total</u>
\$300	\$46,800
\$200	\$31,200
\$150	\$23,400
\$125	\$19,500
\$100	\$15,600
\$90	\$14,040
\$80	\$12,480
\$70	\$10,920
\$60	\$9,360
\$50	\$7,800
\$45	\$7,020
\$40	\$6,240
\$35	\$5,460
\$30	\$4,680
\$25	\$3,900
\$20	\$3,120
\$15	\$2,340
\$10	\$1,560
\$5	\$780

<u>Monthly</u>	<u>3-Year Total</u>
\$1,000	\$36,000
\$800	\$28,800
\$600	\$21,600
\$500	\$18,000
\$400	\$14,400
\$360	\$12,960
\$320	\$11,520
\$280	\$10,080
\$240	\$8,640
\$200	\$7,200
\$180	\$6,480
\$160	\$5,760
\$140	\$5,040
\$120	\$4,320
\$100	\$3,600
\$80	\$2,880
\$60	\$2,160
\$40	\$1,440
\$20	\$720



CREATIVE GIFT PLANNING

Many of us are experienced at stewardship to the mission and ministry of Christ Episcopal Church. Some members tithe (give 10%), and some exceed the tithe in their giving. Most of us provide from our current resources – checking and savings – to supply our support of the church.

Often, however, gifts for capital campaigns are contributed in ways other than cash and checkbook. Let's think outside the conventional box and be creative in our giving.

Gifts of Appreciated Investments

Donations of appreciated long-term stocks, mutual funds, or other investments are an excellent way to support our church. When you donate appreciated investments, you do not pay capital gains tax, and you receive a charitable deduction for the full fair market value on the date of the donation.

Gifts from an IRA

If you meet the age requirement, you can make a tax free charitable contribution to the church from your IRA. The contribution must be made directly from your IRA to the church and it may be applied to your Required Minimum Distribution.

Life Insurance

You may consider donating existing life insurance by making the church both the owner and the beneficiary of the policy. If the policy is whole (ordinary) life insurance, you will receive an immediate tax deduction for the cash value on your federal income tax, and, if you continue to pay future premiums, can take future deductions.

Lifestyle Giving

Another way to generate gifts for our campaign is to consider lifestyle adjustments. Postponing the purchase of an automobile or remodeling of a home, are all ways to “find money” in order to make a generous gift.

Rental Income from Real Property

Some members may own either a vacation home/condo or a time share property. Consider renting out your property and gifting all or a portion of the rental income to the church.

Real Property as a Charitable Gift

There are two main methods for real estate to be given as a charitable gift. The first is an outright gift of the property. This is the simplest, most direct method resulting in the most immediate tax benefit. The second method involves bequests either through one's will, establishment of trusts or annuities. For the latter there are various tax benefits depending upon the specifics of the bequest and upon the individual's life circumstances and desires.

Note: Christ Episcopal Church cannot give legal advice. You are encouraged to consult your professional advisor before implementing any of the above plans.

God's Grace Flowing . . .

There are two seas in Palestine. One is fresh,
and the fish are in it. Splashes of green adorn its banks.

Trees spread their branches over it and
stretch out their roots to sip of its healing water.

Along its shores the children play.

The River Jordan makes this sea with
sparkling water from the hills. So it laughs
in the sunshine. And people build their houses near it,
birds make their nests, and every kind of life
is happier because it is there.

The River Jordan flows on south into another sea.

There is no splash of fish, no fluttering leaf,
no song of birds, no children's laughter.

Travelers choose another route unless on urgent business.

The air hangs heavy about its waters, and neither
humankind nor beast nor fowl will drink.

What makes this difference in these neighbor seas?
Not the River Jordan. Not the soil in which they lie;
nor the country round about.

This is the difference. The Sea of Galilee
receives but does not keep the River Jordan.

For every drop that flows into it, another flows out.

The giving and receiving go on in equal measure.

The other sea is shrewder, hoarding its income jealously.

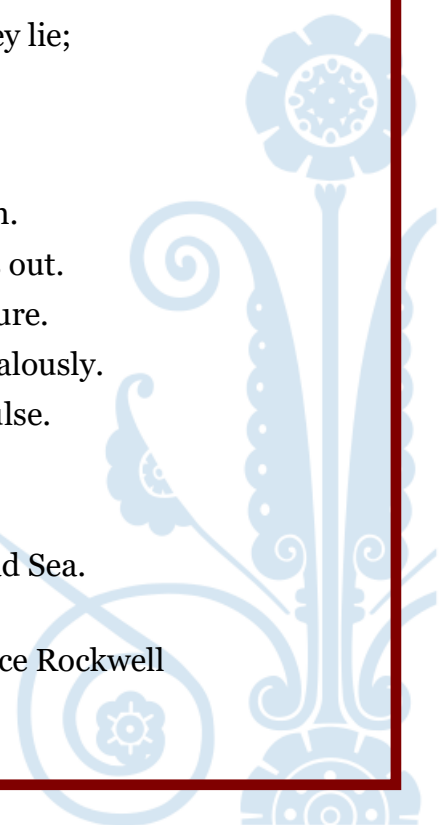
It will not be tempted into any generous impulse.

Every drop it gets, it keeps.

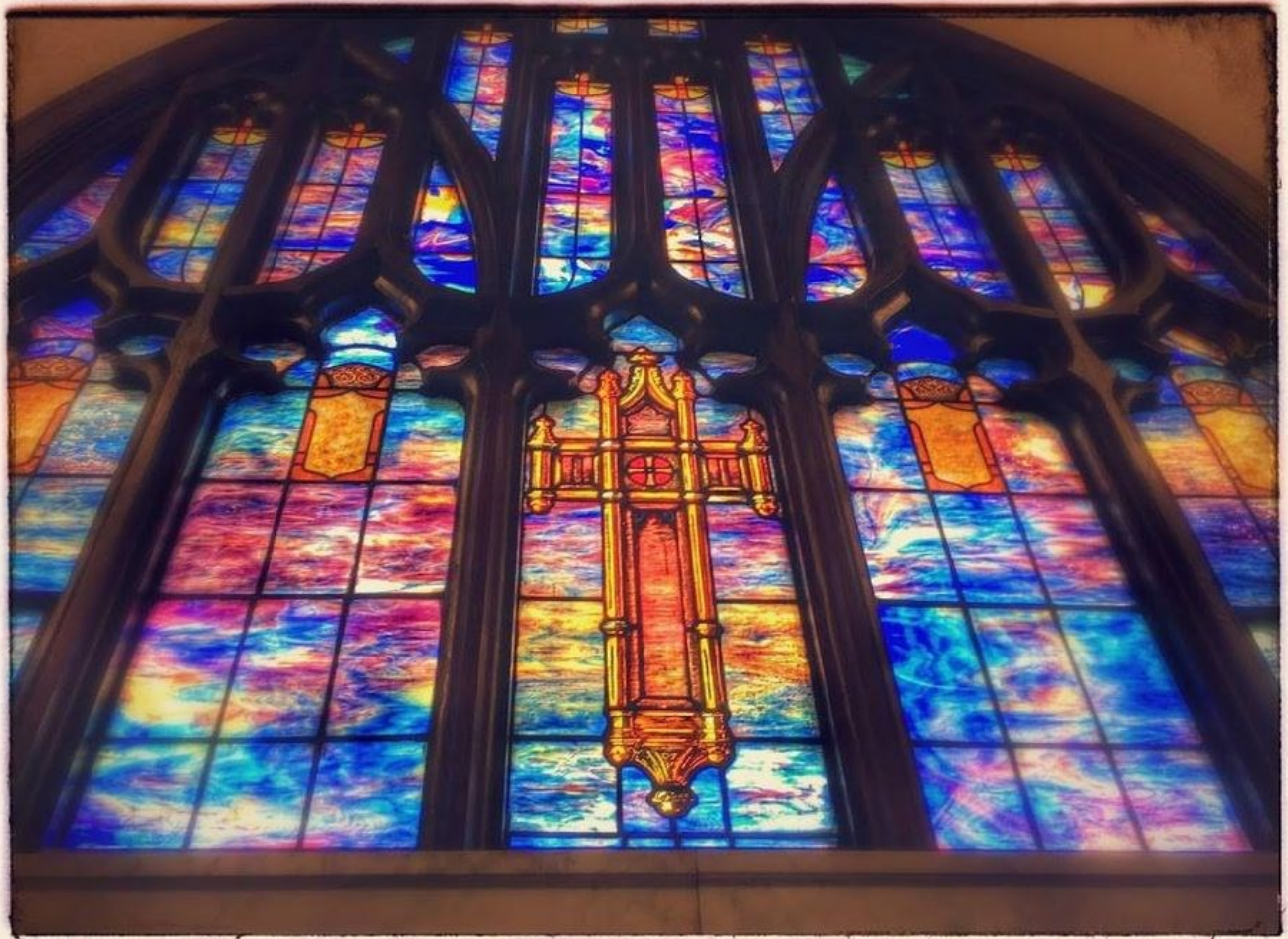
The Sea of Galilee gives and lives.

The other sea gives nothing. It is named the Dead Sea.

"Two Seas" Original by Bruce Barton, adapted by Bruce Rockwell



Christ Church, located in the heart of the University District, serves as a place of joy, as it has for the last 120 years. We are steeped in centuries-old Christian practices and love robust dialogue about how our faith informs our modern lives. We believe the diversity of people reflects God's abundant love. We welcome gay, lesbian, bisexual, and transgender people. We welcome single people, partnered people, divorced people and widowed people. We welcome people who are neurodivergent and people who are neurotypical. We welcome people with disabilities and people without disabilities. We treasure the energy of our children and the wisdom of our older members. Wherever you are in life, there is a place for you in our community.



Christ Episcopal Church

4548 Brooklyn Ave NE
Seattle, WA 98105

206.633.1611

christchurchseattle.org