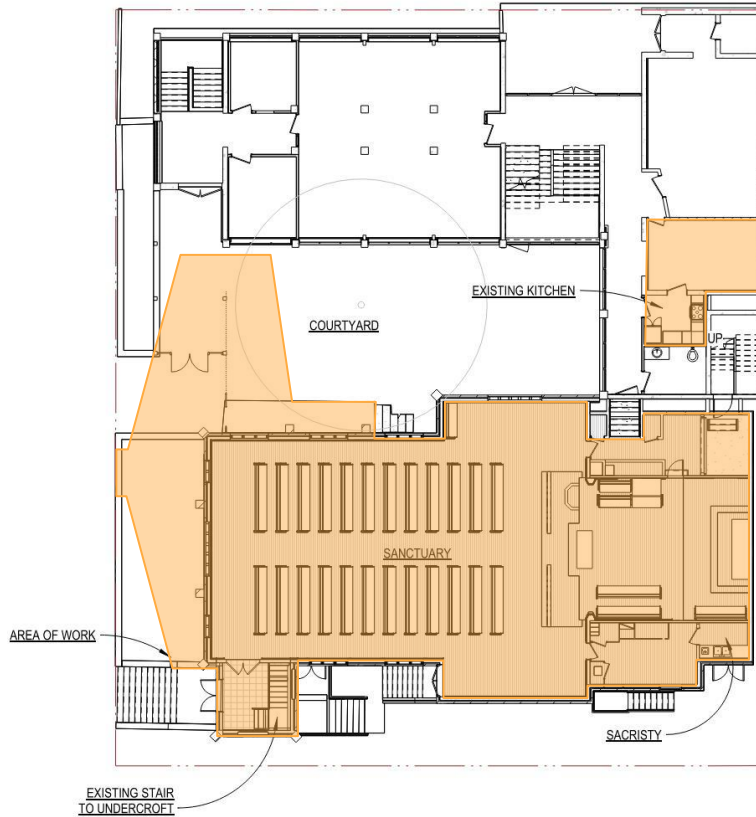


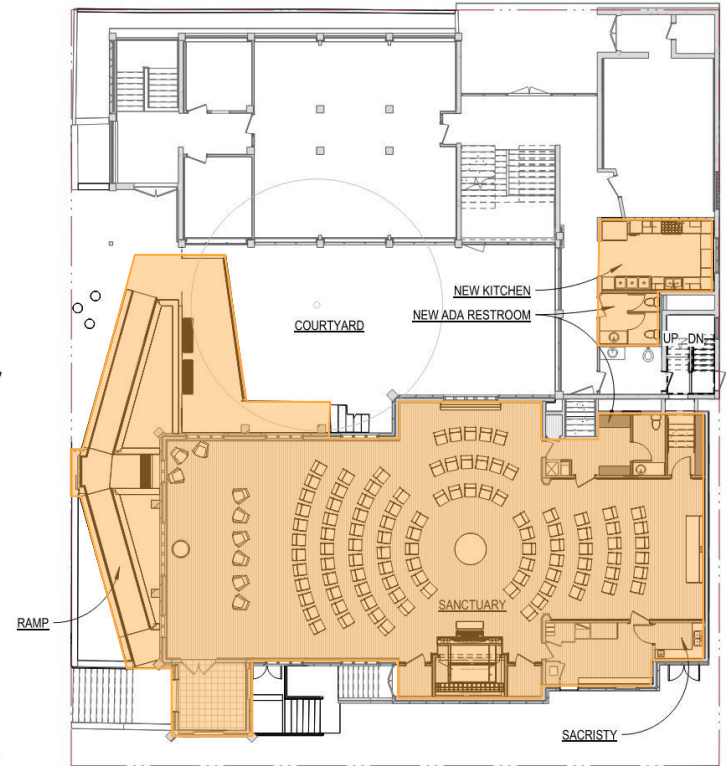
# CHRIST EPISCOPAL CHURCH

## PROJECT GOALS

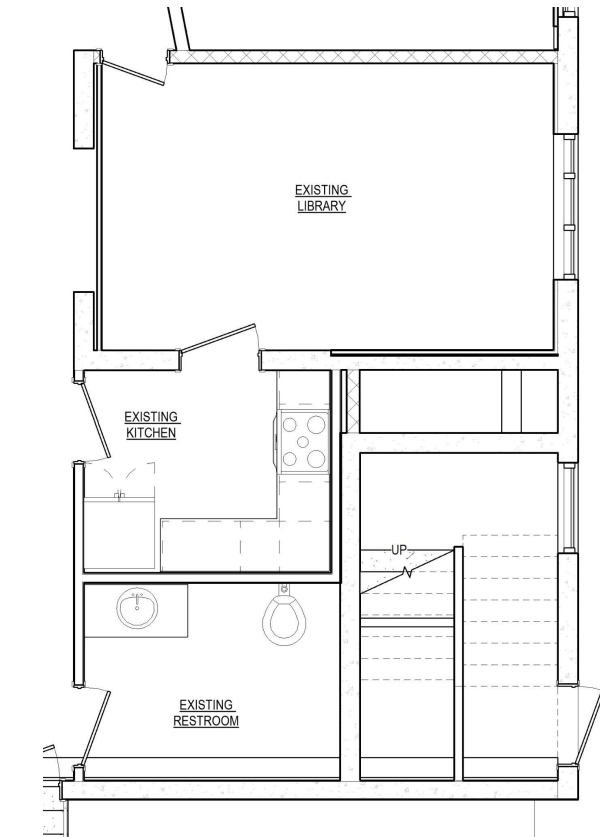
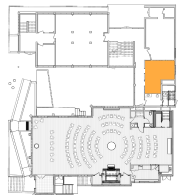
- MAKE WORSHIP AND SOCIAL SPACE ACCESSIBLE TO ALL
- CREATE SANCTUARY SPACE THAT CENTERS ON BAPTISM AND EUCHARIST
- CREATE A FLEXIBLE, MULTI-USE SANCTUARY SPACE FOR OUR COMMUNITY
- PROMINENT SPACE FOR OUR BEAUTIFUL AND HISTORIC PIPE ORGAN
- DEDICATED UNDERCROFT SPACE FOR GOOD WORKS
- UPDATE AND IMPROVE CHURCH HOUSE ACCESSIBILITY FOR US AND FOR OUR NEIGHBORS



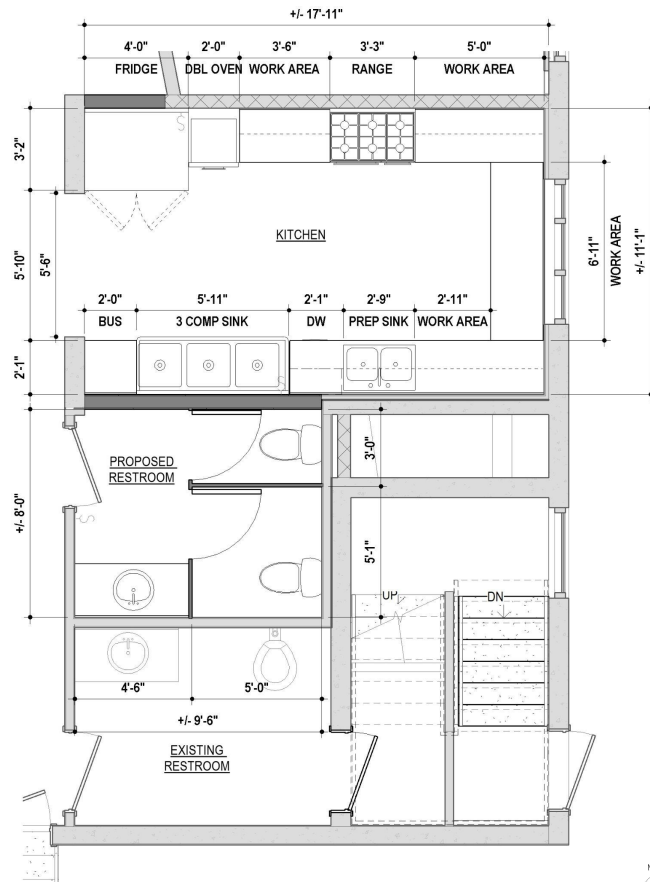
EXISTING PLAN



PROPOSED PLAN

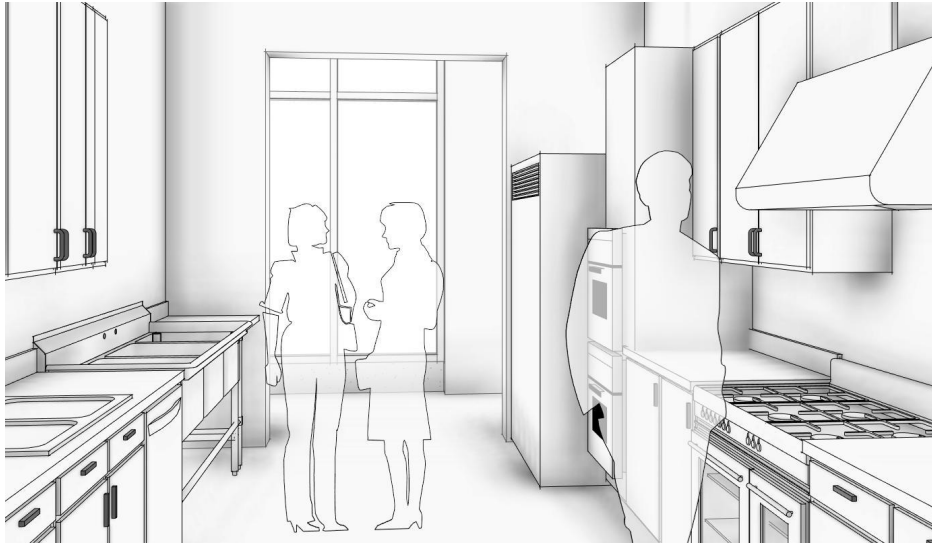


EXISTING PLAN



PROPOSED PLAN

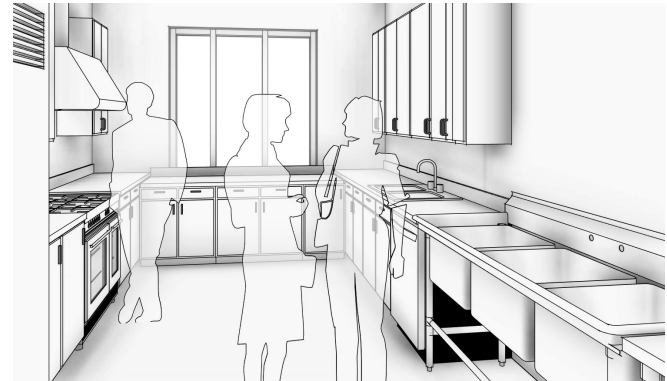
WILSON KITCHEN & RESTROOM



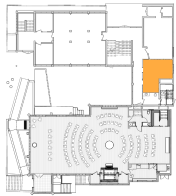
KITCHEN LOOKING WEST



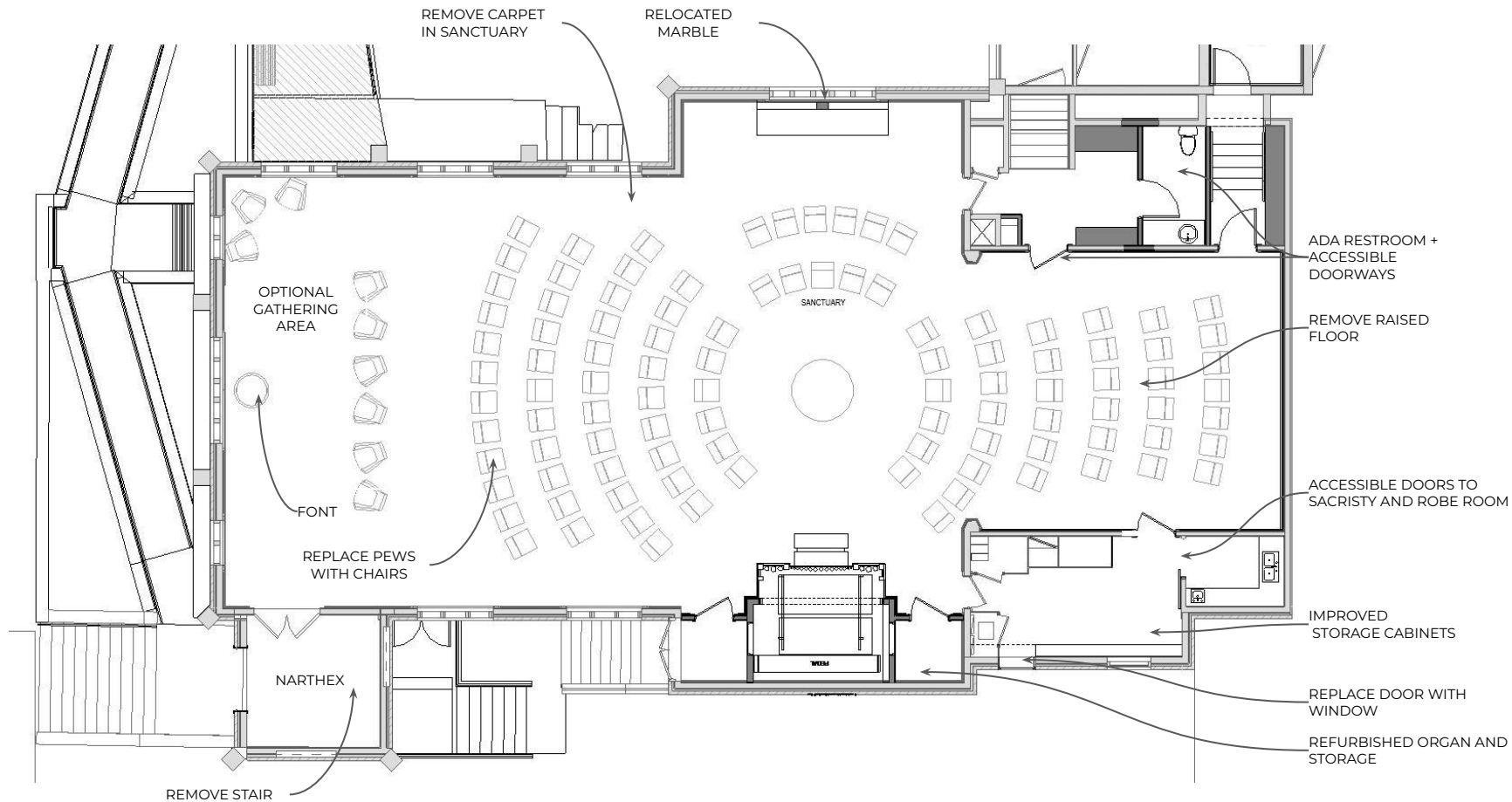
KITCHEN LOOKING NORTHEAST



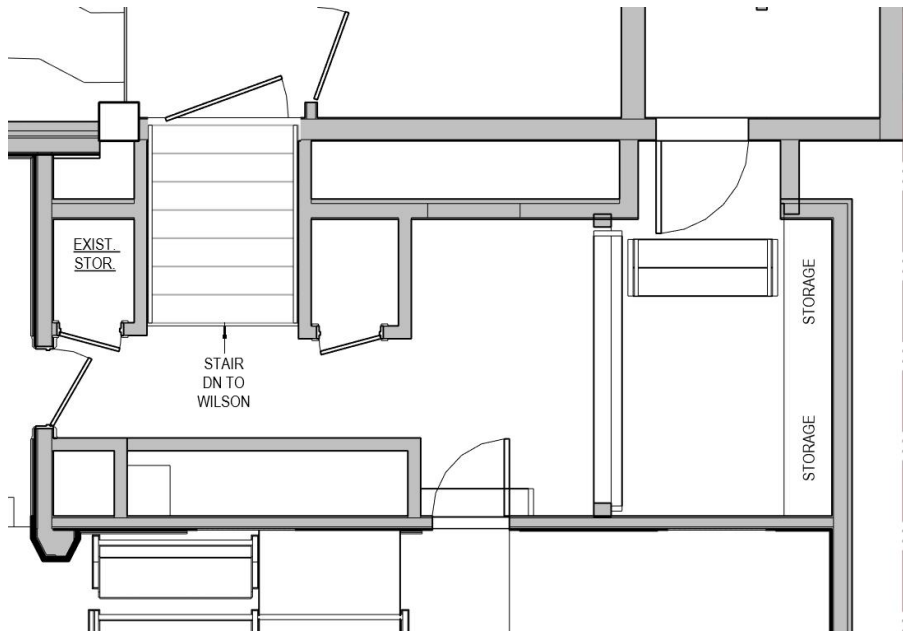
KITCHEN LOOKING EAST



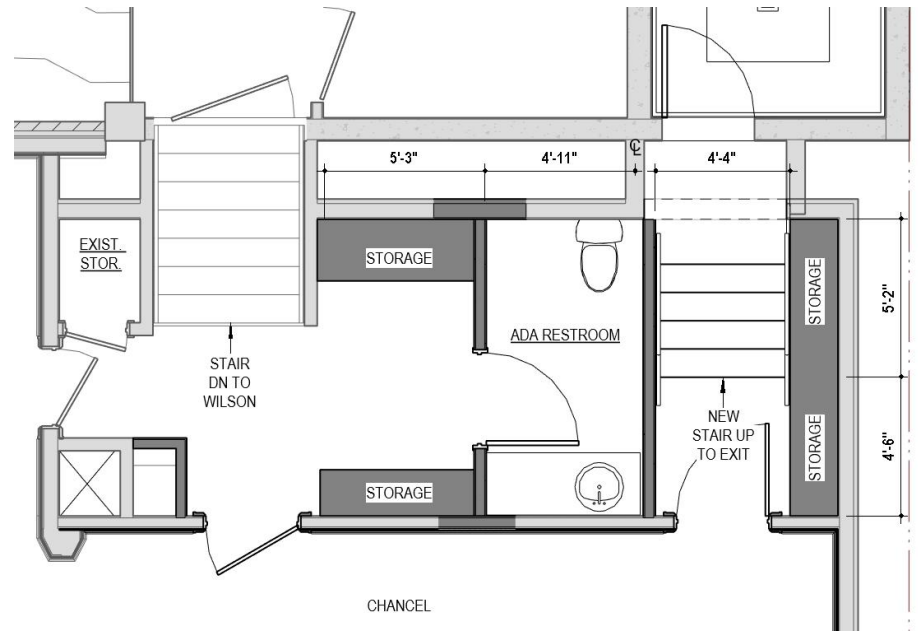
WILSON KITCHEN & RESTROOM



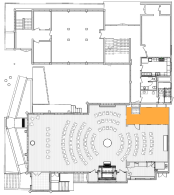
SANCTUARY



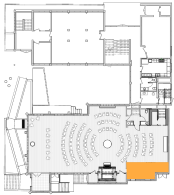
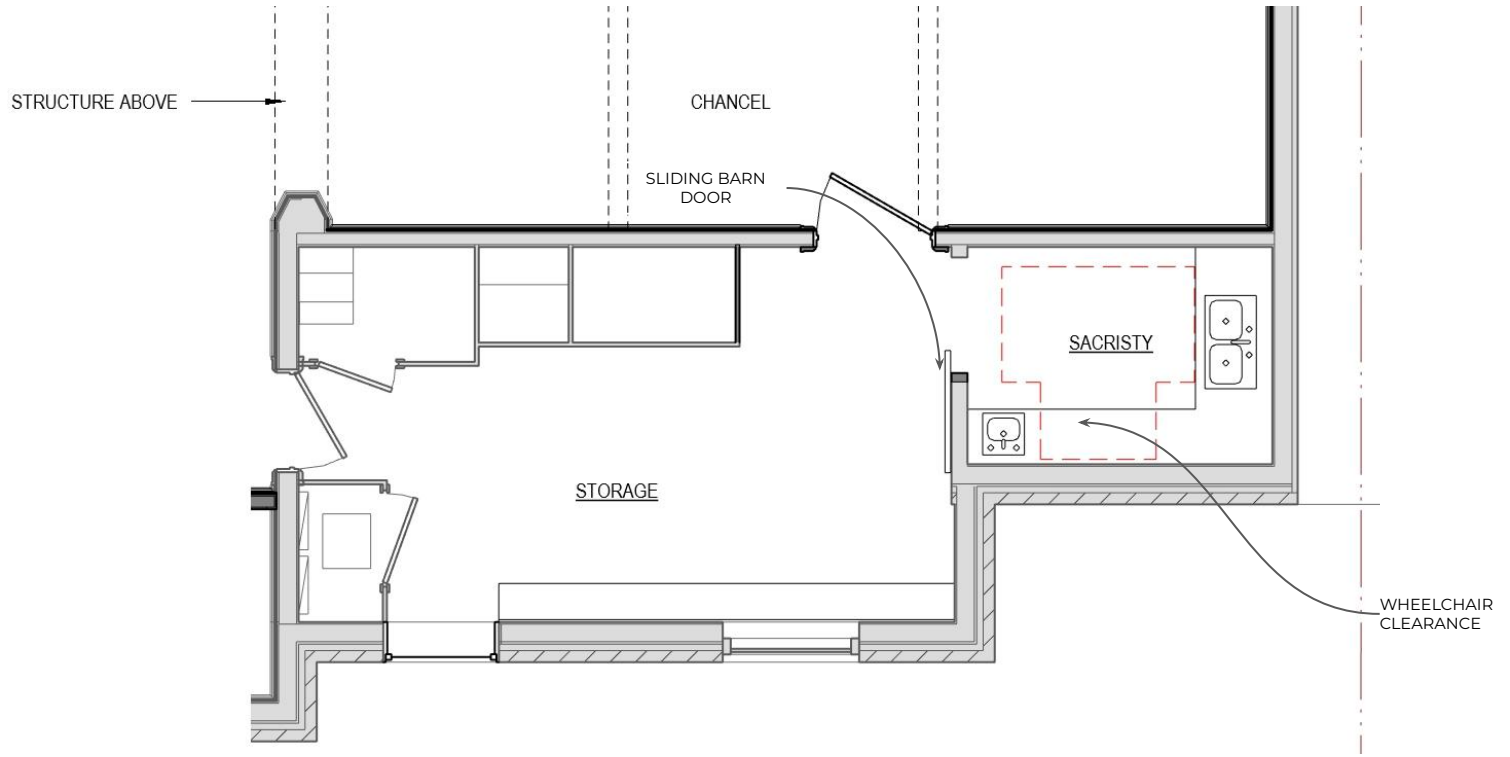
EXISTING



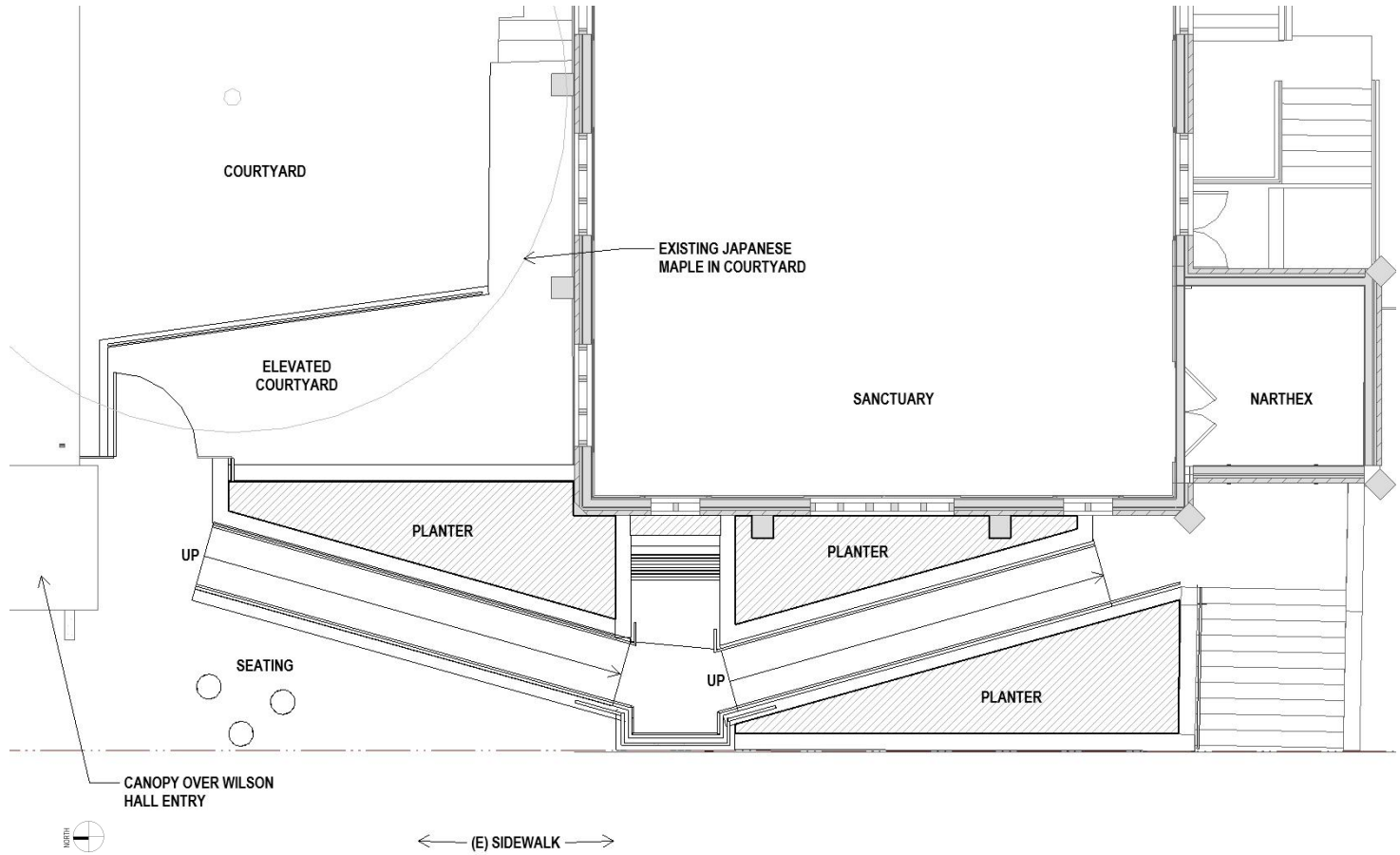
PROPOSED



NEW ADA RESTROOM AND STORAGE



SACRISTY

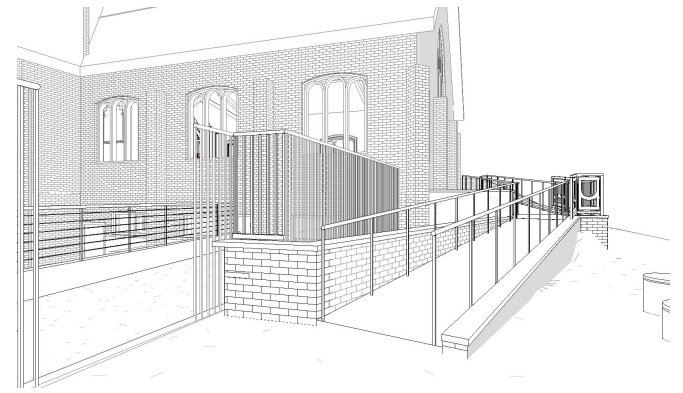


RAMP PLAN

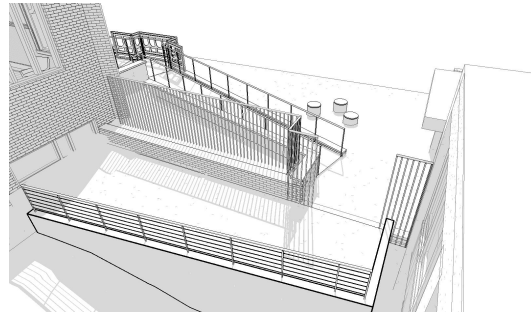




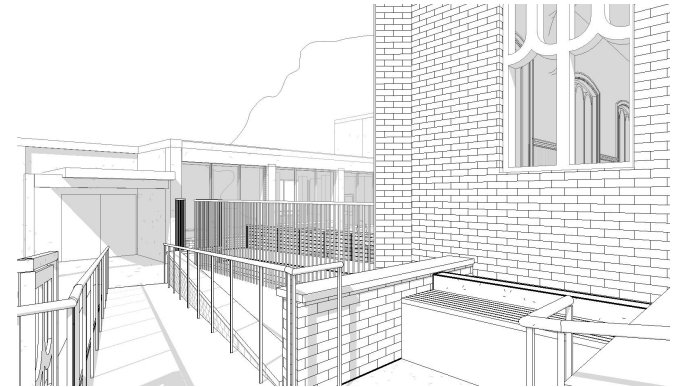
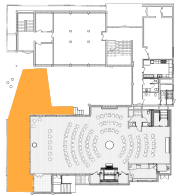
VIEW LOOKING EAST



BASE OF RAMP LOOKING TOWARDS COURTYARD

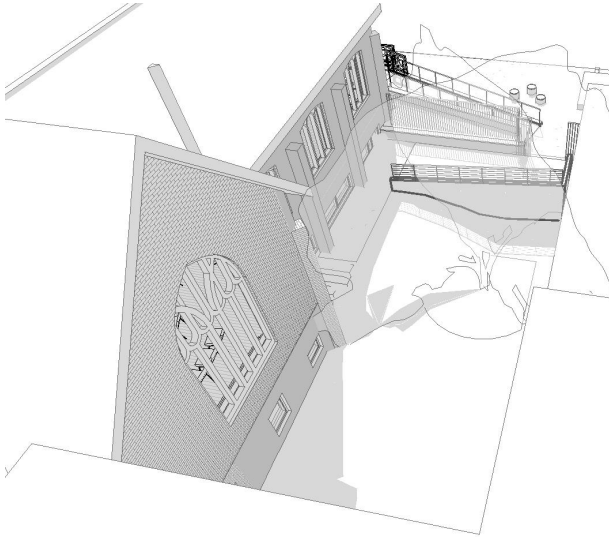


VIEW OF COURTYARD AND RAMP

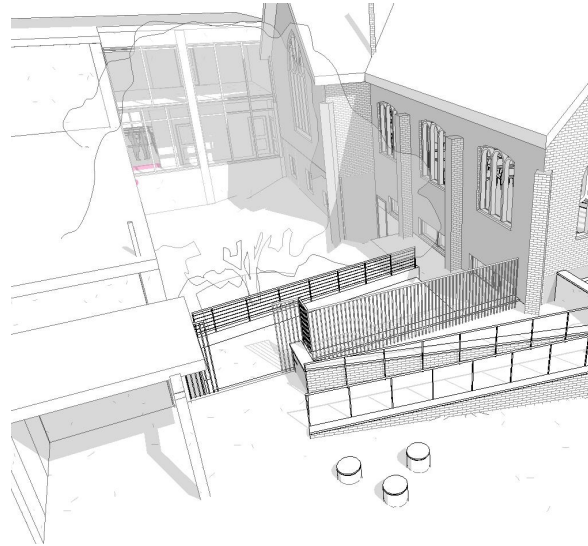


VIEW FROM LANDING LOOKING NORTH

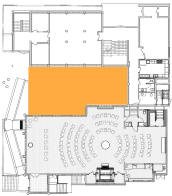


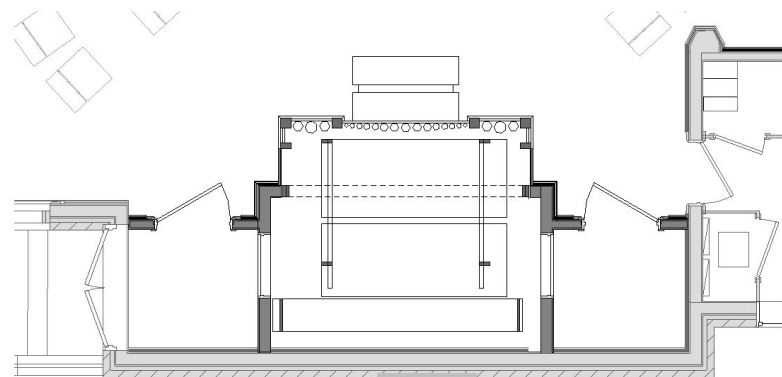
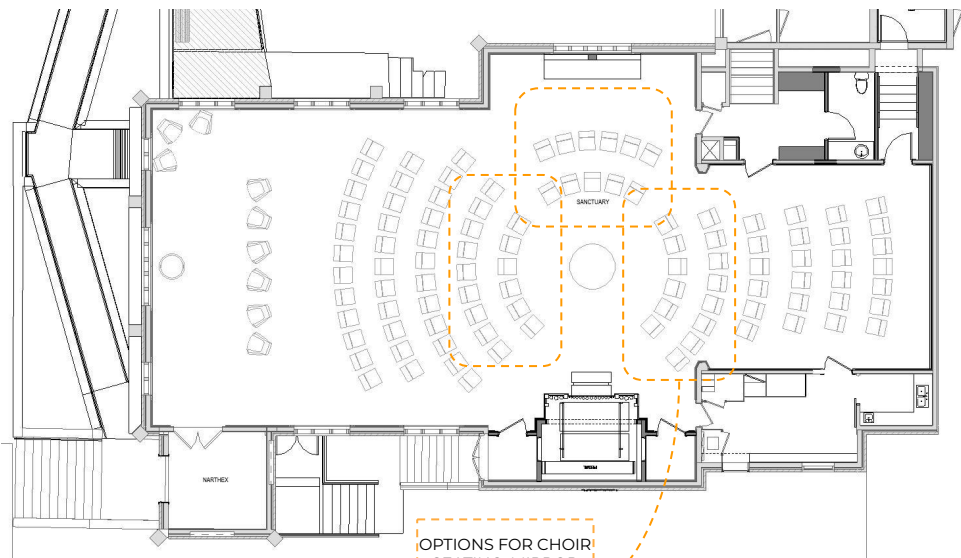


AERIAL VIEW OF COURTYARD LOOKING WEST



AERIAL VIEW OF RAMP AND COURTYARD LOOKING EAST





## BENEFITS

- BEST ACOUSTICALLY
- LEAST COSTLY
- SOUTH SACRISTY AND ROBING AREA CAN STAY AS-IS WITH MINOR MODIFICATIONS
- NO STRUCTURAL CHANGES
- WORKS WELL ARCHITECTURALLY AND FOR FUTURE CONCERTS
- BETTER SITE LINES

ORGAN

